

# Infield EnergyGateway

Try the demo - [www.offshoreenergygateway.com](http://www.offshoreenergygateway.com)

**Infield Systems Limited, now widely acknowledged as one of the definitive independent information resources for the offshore oil and gas industry, are proud to announce the launch of a completely new and original online GIS mapping and data source.**

The Infield EnergyGateway is a new, user friendly, practical mapping system based upon existing and well respected, in-house data resources. The system will be the front-end locator for multiple data layers of highly informative and client specific oil and gas data.

The GIS system will be used to:

- Support client forecasting
- Tendering process
- Viewing of regional specific projects and campaigns.

The complete EnergyGateway system will provide a full regional overview of both operational and up-coming field locations, reserves and field infrastructure, including; Licence Blocks and current Operator and Ownership, Pipelines, Fixed and Floating Production Systems, Water Depths, Oil, Gas, and LNG terminals (on- and off- shore) and Major Ports in addition to the regional Major Cities, Towns and Country Median Lines.

Starting from a world overview, the Infield EnergyGateway will display the world's major oil and gas regions as 13 separate 'EnergyGateways':

- North West European Continental Shelf
- Southern Europe
- Eastern Europe
- North Africa
- West Africa
- South & East Africa
- Middle East & Caspian Sea
- India
- South East Asia
- East Asia (including Sakhalin Island)
- Australasia
- North America (including Gulf of Mexico)
- Latin America (including Mexico & Brazil)

By simply selecting any of the subscribed to regional EnergyGateways the user will instantly be able to display an over-view of the Region, with all countries coastlines, median lines and geographic latitude and longitudinal grid on display.



**Infield Systems Limited** is dedicated to the provision of accurate and up-to-date data, market sector reports, mapping, analysis and forecasts to the offshore oil and gas and marine industries. Infield services clients in over 40 countries from a wide range of organisations including E&P companies, contractors, manufacturers, government agencies and the financial community. Infield is widely acknowledged as the definitive independent information resource.

- Databases
- Publications
- Analytical Services
- Online Mapping
- GIS & Mapping

**Welcome to the**  
**infield EnergyGateway**  
Opening the world to online mapping and GIS services

**infield**  
Market Analysts &  
Business Strategy Consultants



**Client Log-in**



**Try the Demo**

For more information, [click here to contact Infield Systems Limited](#)



**Visit Acergy at  
OTC 2008**

**see more information  
on our website**

[www.acergy-group.com](http://www.acergy-group.com)

# Infield EnergyGateway

## The Infield EnergyGateway System

Using the Online EnergyGateway is straightforward. By selecting one of the 13 listed EnergyGateway regions, the map will appear at a pre-set scale showing a complete overview of the subscribed to region.

All layers will allow easy access into any of the regional data sets, simply by placing the cursor point over the selected image reference, one click, will bring the data set to the screen. The extent, breadth and depth of data coverage will be in line with either existing or agreed data subscriptions.

With easy download or export of the map image, the user can have a very powerful and informative document ready in minutes.

The GIS system will allow for export of regional and block specific maps for import into proposals and other working documents.

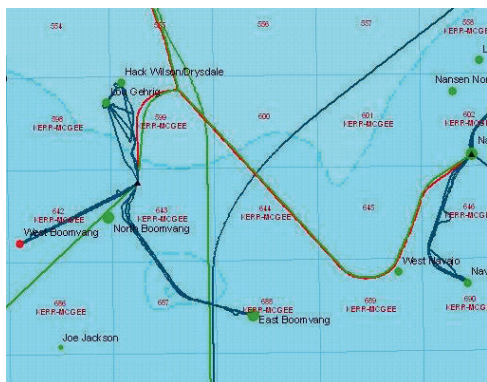
### Basic Online Packages

A basic online, stand-alone map imaging package provides a business aide where simple, straight forward reference maps only are required. Content is as per the complete EnergyGateway, but exclude the background text links and all future projects.

The online system provides versatility by allowing the user to enter the mapping package via the Internet, select their region or area of interest or even one particular concession block, export to file and print. Purchases will be through annual subscription.

The system will allow for search and export of detailed maps showing selected layers only, with the option to add in client specific references, such as; vessel locations, possible pipeline routes, transportation routes or field layout alternatives, into the exported graphic file.

The Basic Online Package can be upgraded to an advanced system at anytime.



[www.infieldlive.com](http://www.infieldlive.com)



### Pricing & Package Availability

#### Basic Edition Single User Licence

The Basic edition single user licence allows access to any of the 13 regions purchased; North America (including the US Gulf of Mexico), West Africa, North West European Continental Shelf, South East Asia, Latin America, Australasia, Middle East & Caspian, North Africa, South & East Africa, Southern Europe, India and Eastern Europe.

The Basic Edition will comprise of the following visual map layers;

#### Geographical Layers:-

- Global Coastline;
- Bathymetry (water depths)
- Country Median Lines
- Major Cities, Towns and Ports

#### Oil and Gas Related Layers:-

- Regional License Blocks
- Operator
- Producing Oil Fields
- Producing Gas Fields
- Existing Fixed Platforms
- Existing Floating Facilities
- Existing Conventional Pipelines

Prices For New EnergyGateway Clients:

Single Region: **UK£1,950.00**  
Two regions: **UK£3,700.00**  
Three regions: **UK£5,350.00**  
Each additional region thereafter:  
**UK£1,550.00**  
All Regions: **UK£12,675.00**

EnergyGateway is available through online subscription. The above price is for single site licence for a twelve month online subscription.

Additional Text Data Layers - Background text data sets, taken from the Infield Offshore Energy Database, to complement the visual mapping system are available and additional charges will apply.

### Upgrade to the Advanced Map System for Single Users

In addition to the Regional Basic Mapping Package the following additional Visual Map Image Layers are available:

- Proposed Oil and Gas Fields
- Proposed Fixed Structure
- Proposed Floating Production
- Proposed Conventional Pipelines

Prices upon application based on regional subscriptions.

Prices for additional advanced bespoke layers are available upon request.

### Are you an existing subscriber to the Infield Energy Database?

If so, why not take advantage of the preferential price structure open to all existing Offshore Energy Database subscribers, by upgrading your existing data package(s) to incorporate the EnergyGateway mapping system to enhance your energy data capability?

The following upgrade charges would apply:

Worldwide EnergyGateway Front-End System to run with existing data sets subscribed to is 30% of present annual subscription level with a minimum fee of GB£700.00.

Existing Infield subscribers can upgrade to include any of the Basic Package regions or Global Basic Package. Prices are dependant upon current subscriptions.

### Expanded or Additional Text Data Layers

Additional or expanded text data sets, in addition to the data sets already subscribed to, taken from the Infield Energy Database, to complement the visual mapping system will be available – additional charges, over and above existing subscription will apply.



# Infield EnergyGateway

## 'Hot-Spot' sponsorship packages

### Why not take up one of the 'Hot-Spot' sponsorship packages?

Within the commercially released editions of the Infield EnergyGateway, there are limited number of advertising 'hot-spots' on each region. The mapping tool is a 'first' and the hot-spots are already being booked.

Promotion of the the online versions will be made by direct marketing to the existing Infield subscriber list of over 8,000 individuals within major companies and decision makers within a huge range of business fields, including: national oil companies and operators, large E&P companies, subsea engineering and construction companies, drilling contractors, financial institutions, survey companies, leading engineering companies, equipment manufacturers, classification societies and supply service groups.

### Advertising Specifications:

Within each of the 13 EnergyGateway Regions, up to 10 banner columns can be booked. An advertisement can either be a static or animated file (lasting no longer than 12 seconds).

Advertisement placements can be;

- Vertical-Single Column Panel Banners
- 1/2 Screen Panel Banners
- 1/3 column Panel Banners
- 1/4 Screen Panel Banners

Companies who, in turn wish to lead potential clients to their own company web sites are provided a complimentary link to their own company URL.

All Banner Display Adverts will be strategically placed next to the working screen of the selected regional mapping image, providing a high profile for your company's region presence (see image below).

### A Unique Opportunity:

The EnergyGateway is a unique planning tool that combines Infield's proprietary databases containing millions of data points with a user friendly front end to deliver real commercial benefits in business planning, marketing and analysis.

Outline planning for increased functionality is already under way following input and requests from major operators and contractors and as such the number and range of prospective users is increasing all the time.

[www.offshoreenergygateway.com](http://www.offshoreenergygateway.com)

The screenshot displays the Infield Offshore Energy Gateway Mapping application. The main map area shows a complex network of offshore platforms, gas fields, and oil fields in the North America region. The 'Map Contents' panel on the left lists various features such as Existing Fixed Platforms, Existing Floating Platforms, Proposed Fixed Platforms, Existing Gas Fields, Existing Oil Fields, Proposed Gas Fields, Proposed Oil Fields, Wells, Terminals, Ports, MMS Pipelines, Infield Pipelines, Single Point Moorings, Heliports, Cities, Latitude/Longitude, Boundaries, Licenses/Operators, Areas, Bathymetry, and Coastline. The map includes a compass rose and a scale bar. On the right side, there are three advertisement banners: FMC Technologies, ABS Offshore Classification, and gpp-TECH. The browser window title is 'Infield Offshore Energy Gateway Mapping' and the URL is 'http://www.infieldlive.com/offshoreenergygateway/NorthAmericaRegion.aspx'.

# Infield EnergyGateway

## EnergyGateway Printed Maps & Posters

### World Oil and Gas Energy Gateway maps

Infield will be publishing a selection of market specific printed maps and wall charts, each comprising;

- World base map
- Bathymetry starting at 200m water depth, through to 5000m plus
- All major ports and supply base locations
- Major towns and cities, country median line and notations
- Infield Offshore Energy Database Data
  - Concession blocks
  - Current Owner/Operator notation
  - Oil and Gas Fields actual & proposed
  - Reserve size
  - Oil and Gas Pipelines, actual & proposed
- Major Interest Areas supported with Detailed Inset Maps outside the Main World Base Map.

### Circulation:

These maps will be printed and freely distributed;

- Major industry conferences and conferences being held during 2008, 2009 and 2010
  - Deep Offshore Technology
  - Subsea Tie-Backs
  - Offshore Technology Conference
  - Offshore Northern Seas
  - Offshore Europe
  - Offshore Asia
  - Oil & Gas Asia
  - Subsea UK
- Infield client and subscriber databases
- Selected key contacts from Infield's marketing database of 10,000 industry executives, major companies and decision makers within a huge range of sectors

### EnergyGateway to Worldwide Floating Production

The first planned EnergyGateway map will specifically cover in the additional OED data layer;

- Floating Structure locations, actual & proposed
- Additional regional FPS attribute data will also be included in the map, including;
  - Operator
  - Project Name
  - Type
    - FPSO
    - TLP
    - Spar
    - Semi-Submersible
    - Ship Shaped
  - Water Depth
  - Field Reserves,
  - Field Start-up Date

### Advertising Opportunities

There will be advertising opportunities within these Maps. Why not take advantage of promoting your company products and services within these unique wall maps?

The opportunities will be strictly limited to 16 advertisement display positions within each of the EnergyGateway maps, with four positions in each corner. Each position will be a full colour 10cm x 10cm square.

Companies taking advantage of these advertising opportunities will be provided with 50 copies the map to distribute to staff, clients and suppliers.

**The cost for advertisement placements are GB£3,500 per placement.**

### EnergyGateway to Worldwide SURF

This EnergyGateway map will focus on global SURF projects With specific SURF Focus on:

- Fixed & Floating Structure location with structure reference
- All major SURF projects, Actual, Proposed & Under Review
- Additional regional SURF attribute data

### EnergyGateway to Worldwide Deep & Ultra-deepwater Fields

This EnergyGateway map will provide a specific focus on projects in water depths greater than 500 metres.

- Floating Structure location
- All projects, producing and proposed
- Additional regional Deep- & Ultra-deepwater attribute data will also be included

### Marketing Opportunities

Infield will also be providing companies with personalised maps and posters. By taking data sets from the Infield EnergyGateway to provide a company specific map or poster.

Examples of personalised maps could be;

- All projects in water depths of >1000m
- Projects relating to a specific operator or field owner
- Client specific work scope
- Client specific project

Using the Infield EnergyGateway and the OED a unique and bespoke type of wall chart can be produced.

Costs for Personalised Maps and Project Charts would be submitted upon request. Prices are based on content, detail and company specific data supplied to Infield.

Please note that final specification, costs and service details are subject to change.

**Initial Enquiry Form**  Yes, I am interested, please contact me with further details  No, I am not interested

<b>Name:</b>			
<b>Company Name:</b>			
<b>Company Address:</b>			
<b>Tel:</b>		<b>Fax:</b>	
<b>Email</b>			